

# Naavinnya Smart Cloud ERP

---

Integrated Cloud-Based ERP Platform for :

Production

Inventory

Sales

Accounts

Business Intelligence

---

# Naavinya Smart Cloud ERP



Finance & Accounting



Inventory & Warehouse



Production Management



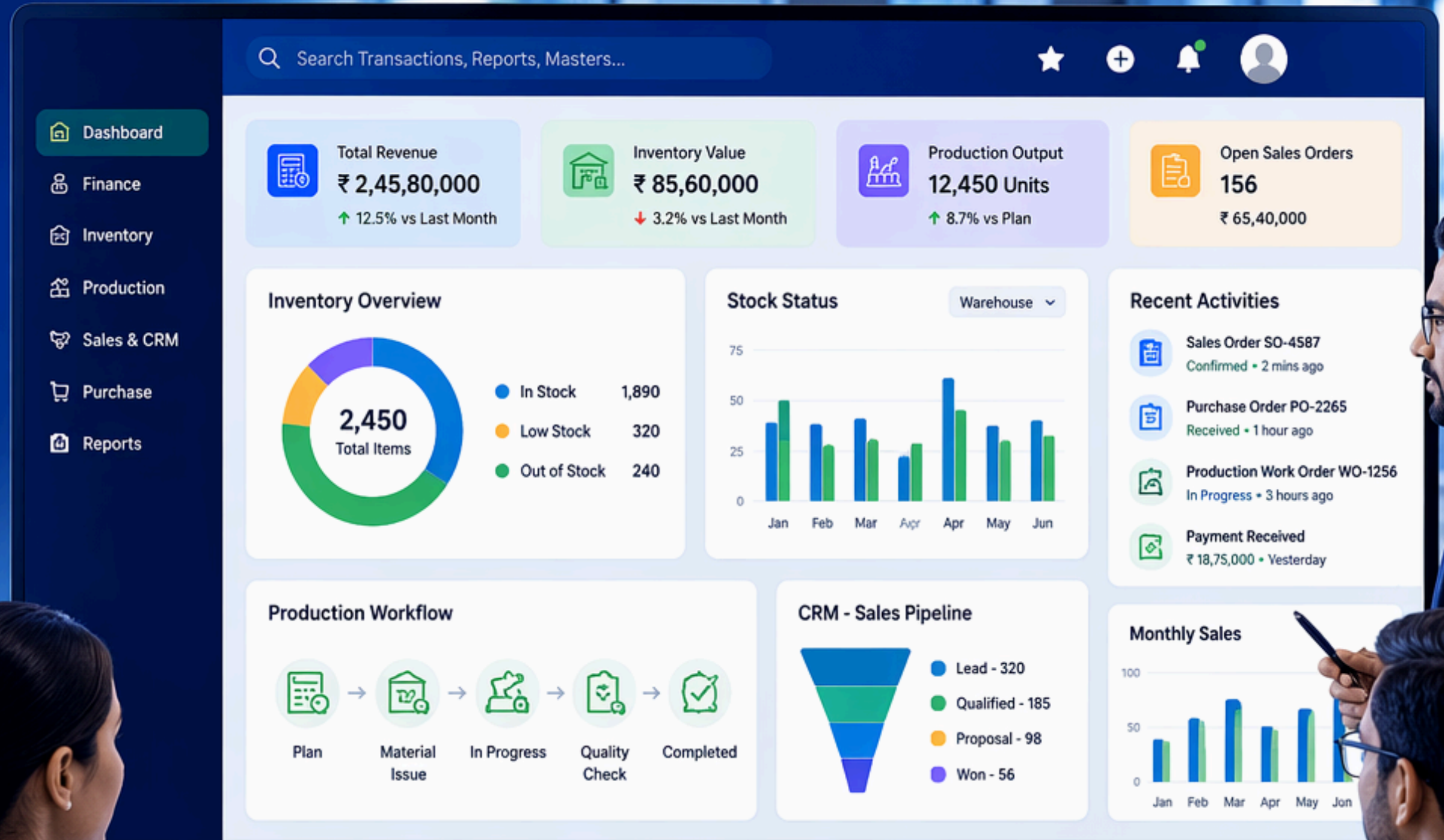
Sales & CRM



Purchase & Procurement



Analytics & Insights



---

# Project

# Introduction

---

modernize and centralize all core business operations under one intelligent cloud-based platform.

This project is being developed as an internal enterprise solution to streamline end-to-end workflows across departments including:

- Accounts & Finance
- Inventory & Warehouse
- Sales & CRM
- Production & Batch Management
- GST Billing & Compliance
- Management Reporting & Analytics





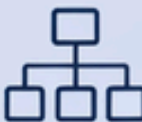
## Traditional Tally



Desktop Based



Accounts Only



Limited Workflow



Manual Stock Updates



VS



## Naavinya Smart Cloud ERP



Cloud Based



Full ERP Ecosystem



Real-Time Inventory



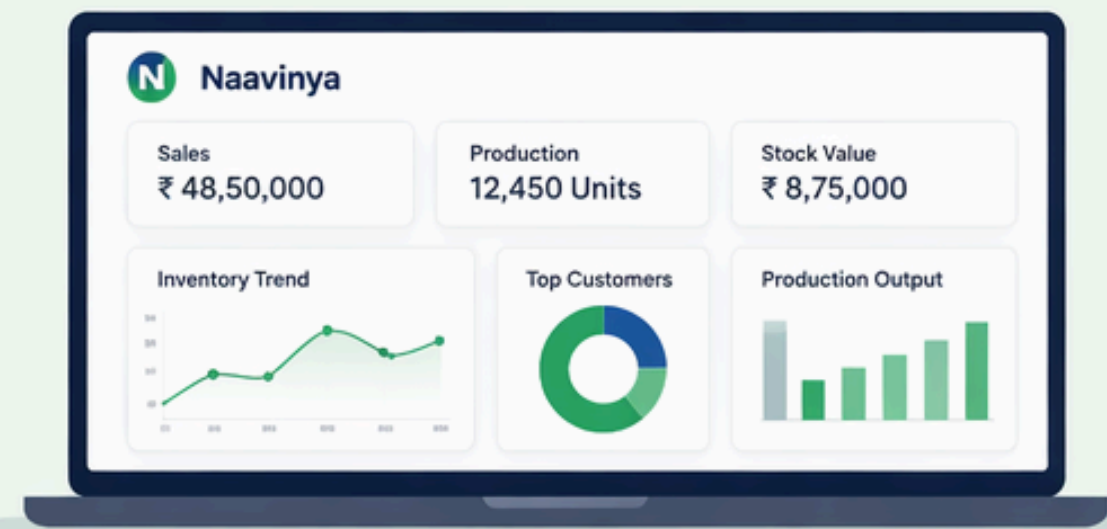
Production Workflow



CRM Integration



Live Dashboards



# How it will help **better than tally**



## Cloud Access

Access your business data anytime, anywhere, from any device. No more being tied to one system.



## Real-Time Data

Get instant updates and live insights. Make faster and smarter decisions.



## Inventory Control

Track stock in real-time, reduce shortages & overstock, improve accuracy.



## Production Management

Plan, track, and optimize production. Improve efficiency and meet deadlines.



## Finance Automation

Automate accounting, GST, compliance & reporting. Close faster with fewer errors.



## CRM Integration

Manage leads, customers, and sales in one place. Build stronger relationships.

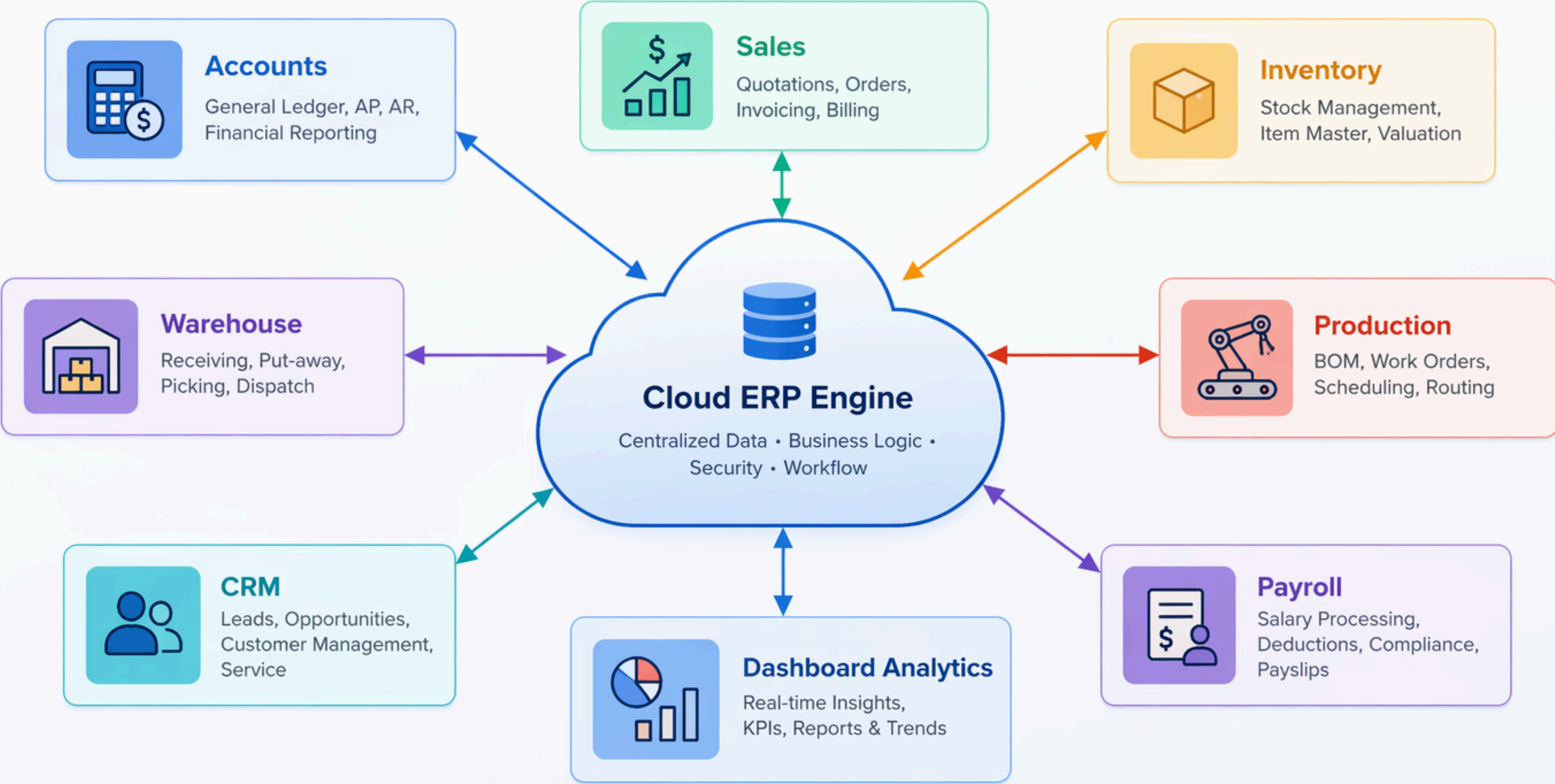


## Future Scalability

Grow your business without changing your system. Scalable, flexible, and future-ready.

# Modular ERP Architecture

Integrated. Scalable. Intelligent.





# ERP WORKFLOW

Integrated Process. Real-Time Visibility. Smarter Decisions.

End-to-End Flow: From Procurement to Performance Insights.



# ROLE-WISE ACCESS

## Admin

- user control
- permissions
- approvals
- system settings

## Accounts

- vouchers
- ledgers
- GST
- receivables

## Sales

- quotations
- invoices
- customer follow-up

## Warehouse

- stock inward
- outward
- dispatch

## Production

- raw material issue
- batch processing
- finished goods

# Inventory & Warehouse Management

- GRN entry
- inward register
- outward challan
- rack / bin allocation
- batch tracking
- stock movement logs
- expiry alerts
- low stock alerts
- transfer between warehouses

# Production Workflow

- BOM / recipe setup
- work order generation
- batch production
- raw material issue
- wastage entry
- finished goods posting
- scrap tracking
- production efficiency reporting

# ACCOUNTS & GST

- journal vouchers
- payment vouchers
- receipt vouchers
- cash book
- bank book
- P&L
- balance sheet
- GST input/output
- aging reports
- receivable dashboard

# Sales + CRM Integration

- lead management
- quotation workflow
- order management
- customer master
- due follow-up
- sales team targets
- payment reminder tracking

# Management Dashboard

- total sales today
- outstanding receivables
- stock valuation
- production status
- top products
- top customers
- profitability snapshot
- branch performance